



WASHINGTON
UNIFIED
SCHOOL
DISTRICT
WEST SACRAMENTO

WUSD FACILITIES, CONSTRUCTION AND PLANNING FALL NEWSLETTER

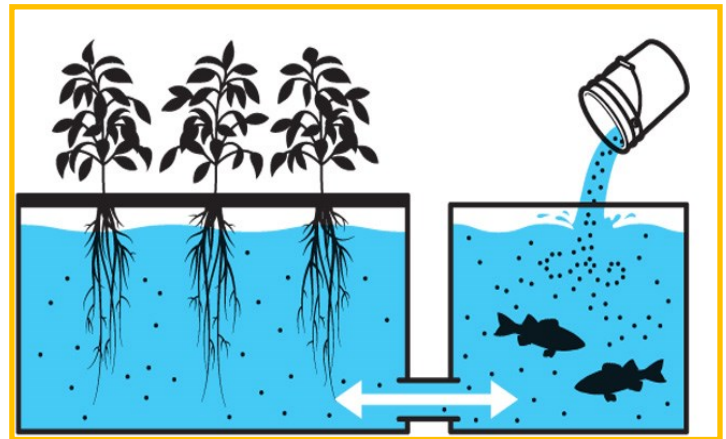
November 2016

BRYTE GREENHOUSE

As Bryte Career and College Training (CCT) is a satellite campus for River City High School, the site's focus uniquely includes providing students with industry-specific knowledge and skills critical for successful employment. Program Director, Renee Collins, has built upon this focus by incorporating Construction, Culinary Arts, and Farm-to-Fork/Agriculture-Science career pathways. Bridging together multiple subject matters at Bryte CCT has created the opportunity for crossover studies resulting in a culmination of skills practiced.

The 2016-2017 school year launched Washington Unified School District's (WUSD) first ever Agricultural Science and Future Farmers of America (FFA) program at Bryte CCT. Agricultural studies will be supported with the addition of a greenhouse scheduled to begin construction January of 2017. The greenhouse materials are currently being manufactured and the proposals related to the construction of the greenhouse will be opened on November 28, 2016.

Once each vendor of the greenhouse team is Board approved, the installation of an all-season greenhouse will begin. The Bryte Greenhouse will feature hard glazed, corrugated polycarbonate walls. The solar lights of the Greenhouse will provide the driest environment possible by use of its condensate control system with supportive cooling, heating and exhaust features to assure productive harvests year round!



The aquaponics growing system will be a highlight of the eco-friendly Bryte Greenhouse. Aquaponics combines aquaculture (raising fish in a contained environment) and hydroponics (growing in a soil-less, recirculating water system). Aquaponics will reinforce the Farm-to-Fork/Agriculture-Science and Culinary Arts programs already practiced at Bryte CCT. Aquaponics is a very low maintenance method of growing that requires minimal resources (energy and water); California drought-approved!

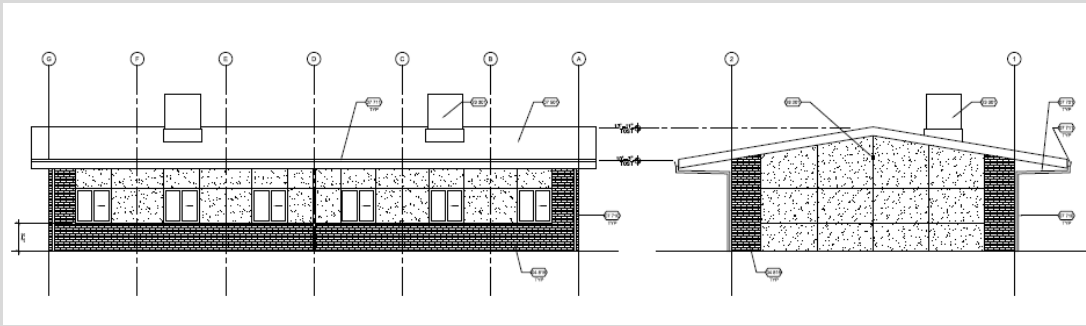
WUSD is excited to taste the harvested crops from the Greenhouse that will no doubtingly be prepared into something tasty in the Bryte Culinary Lab. The Bryte Greenhouse project is anticipated to be complete in April of 2017.

RIVERBANK ADDITIONAL BUILDING

WUSD is proud to declare that the Riverbank Additional Building is on schedule! A contract with Jeff Luchetti Construction (JLC) for the construction of the building was Board approved on October 27, 2016. JLC's bid was within the allocated construction budget for the project and allows the District to commence with the programming needs to begin construction.

The architects associated with the project, BCA Architects, and the Facilities Department have met with Riverbank's Principal, Hortencia Phifer, to make sure that the site needs are met before construction begins. Ms. Phifer expressed interest in the new building reflecting a similar appearance to the existing buildings, as well as allowing for a good flow of traffic for students walking on the campus after the project is complete. Such notes were made and Ms. Phifer's dictations are now a part of the general drawings and site work plans.

Construction will begin as planned by February of 2017 rain or shine! The Facilities Department looks forward to completing this project to welcome the influx of students anticipated to enroll in the coming years.

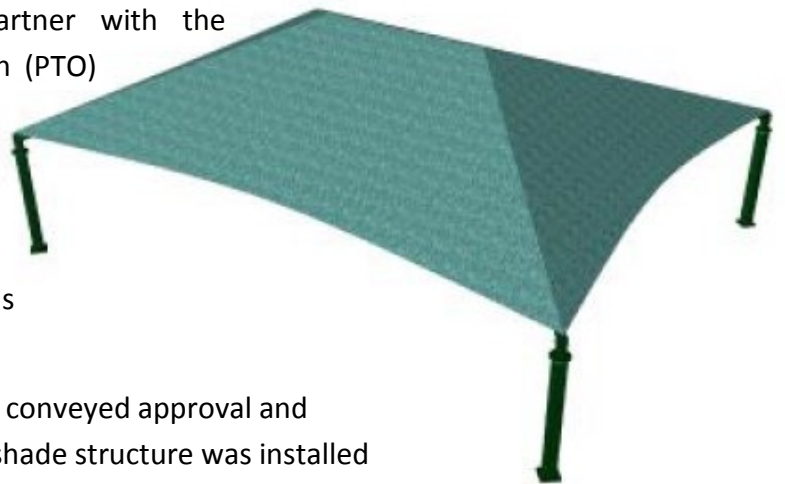


BRIDGEWAY ISLAND SHADE STRUCTURE

The Facilities Department is excited to partner with the Bridgeway Island Parent Teacher Organization (PTO) to install a new shade structure over the Kindergarten play apparatus on the Bridgeway Island Campus. The PTO has raised funds to purchase the shade structure with USA Shade to keep the students protected from UV rays in an area that is otherwise in direct sunlight.

Bridgeway Island Principal, Grace Chin, and the PTO conveyed approval and appreciation for the manner of which the previous shade structure was installed during regularly scheduled school days. Throughout the course of the prior install, USA Shade maintained strict safety measures at all times. The students' safety and well-being continue to be the primary priority when constructing on site.

Construction is scheduled to begin February of 2017, with an expected completion date well in advance of the sunny spring and summer months.



OTHER FUTURE FACILITIES PROJECTS INCLUDE:

Programming for
Roofing Upgrades
District- Wide

Project Conceptual of
Bryte Phase II

Westfield
Community Garden
Reconfiguration

River City Access
Fencing and Gates

Four Marquee
Installations:
Elkhorn, Southport,
Westfield, and
Alyce Norman



**WUSD FACILITIES,
CONSTRUCTION, AND PLANNING**